

Dear Friend,

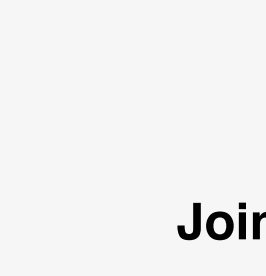
I am The PRIDE Study and PRIDEnet's Participant Engagement Director and would like to share with you why I chose to join the team back in 2016.

I was raised by a community of activists who focused on various social justice issues. As a biracial African American person, even my existence is a testament of the courage and activism of my parents, who faced opposition to their interracial marriage and family. My experiences informed my graduate studies focus on how people's identities and behaviors can be shaped by discrimination, which then impacts what actions they may take. I learned that data is critical: activism is stronger when there's lots of data 'to prove' one's position.

After receiving my PhD, I chose to work directly in the community, and saw repeatedly, the importance of data for activism. For more than a decade, I was a community mobilizer, health educator, and advocate locally, nationally, and globally for sexual and gender minority (SGM) communities. Locally and nationally, I worked for African American SGM communities, and observed that national data projects about African American SGM health beyond HIV were limited and practically non-existent. Globally, I worked with leaders and activists around the world who struggled to raise HIV funds and to secure human rights for SGM people. I saw first-hand how governments in multiple countries intentionally work to prevent data from being collected, in order to keep SGM communities oppressed. With less data, people have less power to push for change.

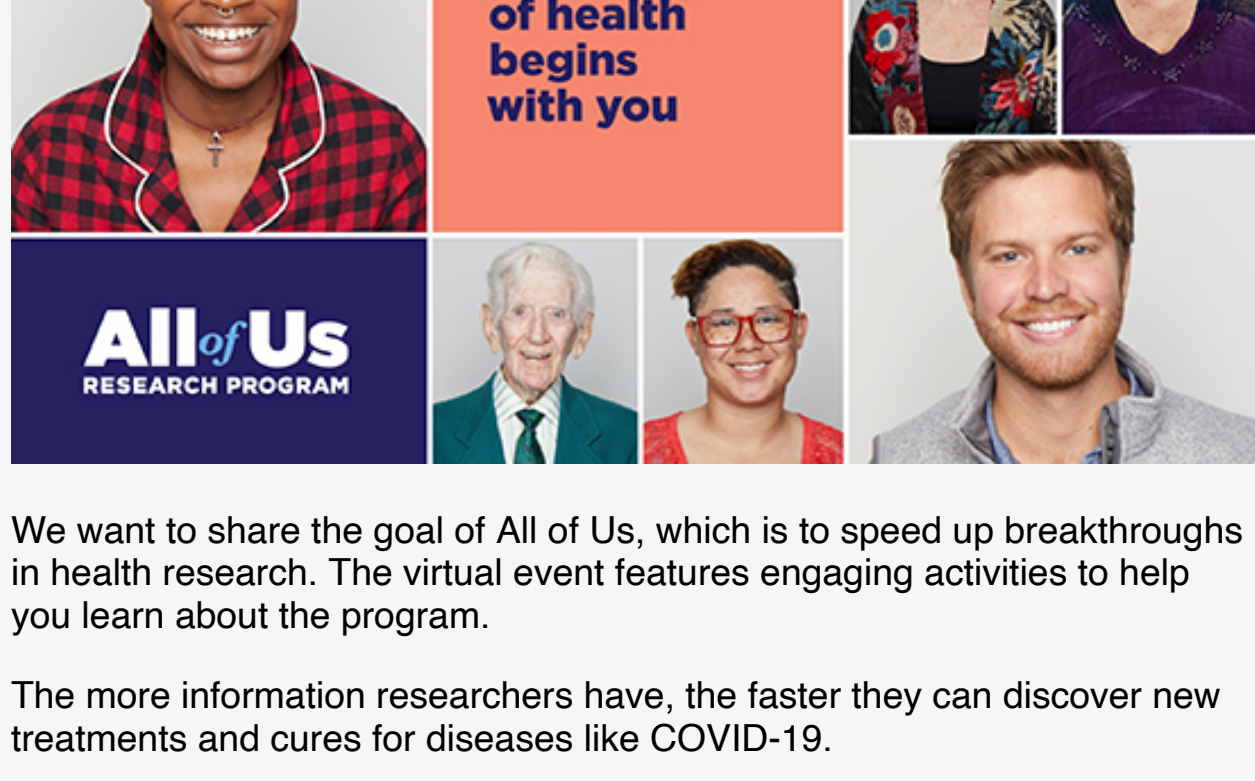
When I saw that The PRIDE Study/PRIDEnet, the first national, longitudinal study to collect holistic health information about SGM people in the US and US Territories was hiring, I was certain this would be my next home. Our data has such enormous potential, from training health care providers about SGM needs to raising critical awareness about underfunded SGM holistic health issues. I believe so strongly in the importance of this research that I also participate in the surveys in my free time. As a same-gender-loving African American man, I know how much African-diasporic SGM communities need national holistic health data, and from as many willing community members as possible (the more, the better!). For all these reasons, I am professionally and personally dedicated to this project.

And as the Participant Engagement Director, please know that I am always happy to hear from participants about their concerns and their experience.

Sincerely,
 **Micah Lubensky**
 Micah Lubensky, PhD
 Participant Engagement Director, The PRIDE Study, PRIDEnet

YOU'RE INVITED!

Join us for **All of Us LGBTQ+ Connect**
 September 15, 1:00-1:45PM PT



We want to share the goal of All of Us, which is to speed up breakthroughs in health research. The virtual event features engaging activities to help you learn about the program.

The more information researchers have, the faster they can discover new treatments and cures for diseases like COVID-19.

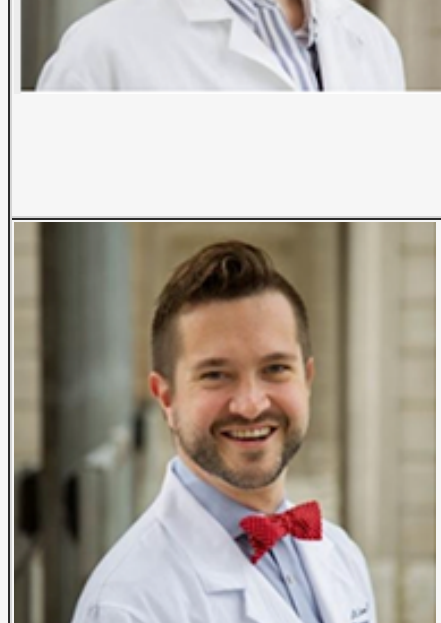
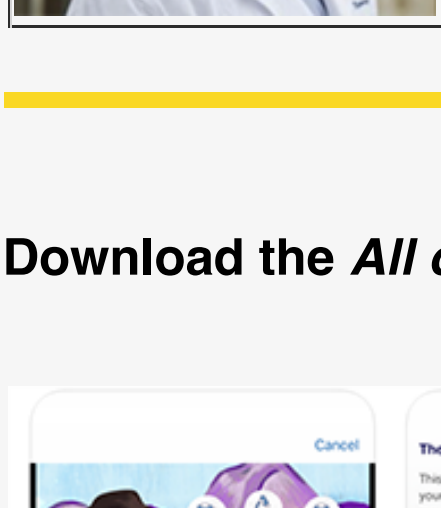
Register at: <http://bit.ly/allofuslgbtq>

Sex Specific and Sex Differences in Cancer

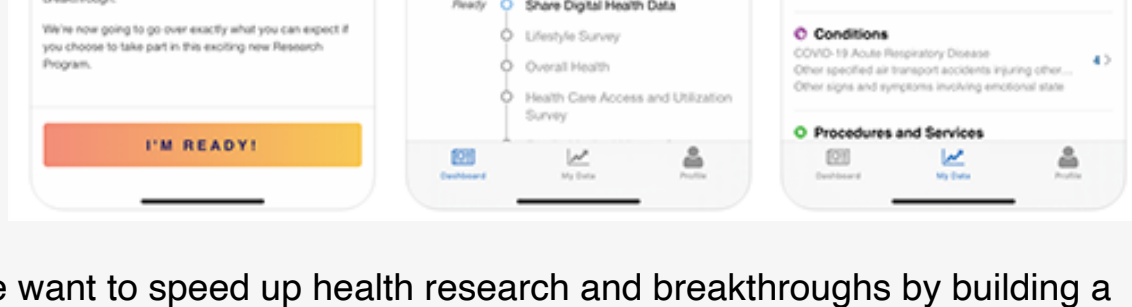
[Webinar](#)

September 29, 10:30AM - 5:30PM PT

We're very excited and honored to be hosting a session on "Cancer in Sexual & Gender Minority (SGM) People" during the "Sex-Specific and Sex Differences in Cancer" Webinar on September 29th. We hope you can join us to discuss cutting-edge research on cancer and survivorship among SGM people and the importance of developing interventions to alleviate these disparities. ~ Mitchell R. Lunn, MD, MAS (Assistant Professor of Medicine) and Juno Obedin-Maliver, MD, MPH, MAS (Assistant Professor of Obstetrics & Gynecology)

	<p>Cancer in Sexual & Gender Minority Persons Panel</p> <p>Juno Obedin-Maliver, MD, MPH, MAS (she/her)</p> <p>Assistant Professor of Obstetrics & Gynecology and of Epidemiology & Population Health, by courtesy Co-Director, The PRIDE Study Stanford Medicine</p>
	<p>Mitchell R. Lunn, MD, MAS (he/him)</p> <p>Assistant Professor of Medicine (Nephrology) Co-Director, The PRIDE Study Stanford Medicine</p>

Download the All of Us Research Program App!



We want to speed up health research and breakthroughs by building a community of a million or more people across the U.S.

The goal is to advance personalized medicine, which is health care based on you as an individual. It takes into account factors like where you live, what you do, and your family health history. Personalized medicine aims to tell people the best ways to stay healthy. If someone does get sick, personalized medicine may help health care teams find the treatment that will work best for them.

HOW THIS WORKS

1. Download the [All of Us mobile app](#) and create your account.
2. If you decide to join, you will be asked to share different kinds of information. You will be asked for basic information like your name and where you live, questions about your health, family, home, and work. If you have an electronic health record, you may be asked to grant access. You might also be asked to give samples, like saliva, blood or urine.
3. The health data gathered from participants is stored in a database. Approved researchers can access the data to explore how factors like environment, lifestyle, and genes can impact health. This may help develop new medical treatments that are unique to individuals and enable a future of precision medicine for all of us.

WHO CAN PARTICIPATE

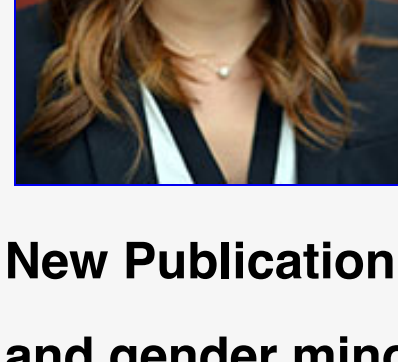
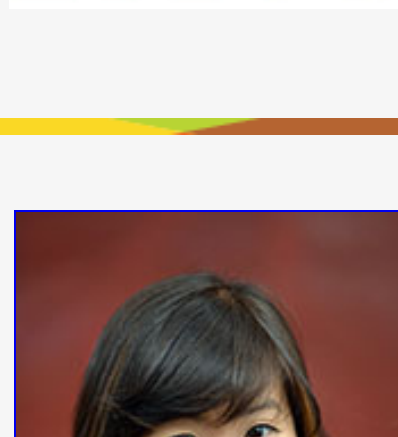
Enrollment is open to all eligible adults who live in the United States. People of every race, ethnicity, sex, gender, and sexual orientation are welcome.

WHO'S INVOLVED

The program is led by the National Institutes of Health, part of the U.S. Department of Health and Human Services and the largest biomedical research organization in the world. We've also partnered with some of the top medical centers, research institutions and community organizations, including the Mayo Clinic, Vanderbilt University, Walgreens and WebMD. Plus, more than 250,000+ people like you!

Download the *All of Us* Research Program app at: <https://www.joinallofus.org/go/download> or

To learn more about the *All of Us* Research Program and to enroll online, visit JoinAllOfUs.org/LGBTQ.



New Publication:

What do sexual and gender minority people want researchers to know about sexual orientation and gender identity questions?

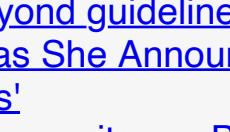
The PRIDE Study's research assistant, Leslie Suen, MD's, "What do sexual and gender minority people want researchers to know about sexual orientation and gender identity questions?" was published by *Archives of Sexual Behavior*. This is the first time such a large group of LGBTQ+ people have been asked for their views on questions about sexual orientation and gender identity and how these questions could be improved. We learned that current questions often didn't allow for fluidity in sexual orientation and gender identities, and questions often didn't capture various identities. We also learned that questions weren't specific enough.

[Learn more](#)

OUR ONLINE COMMUNITY!

Become a part of our online community and learn about program updates, as well as what's happening in the community around the country.

Follow One, Follow All, Follow Today!

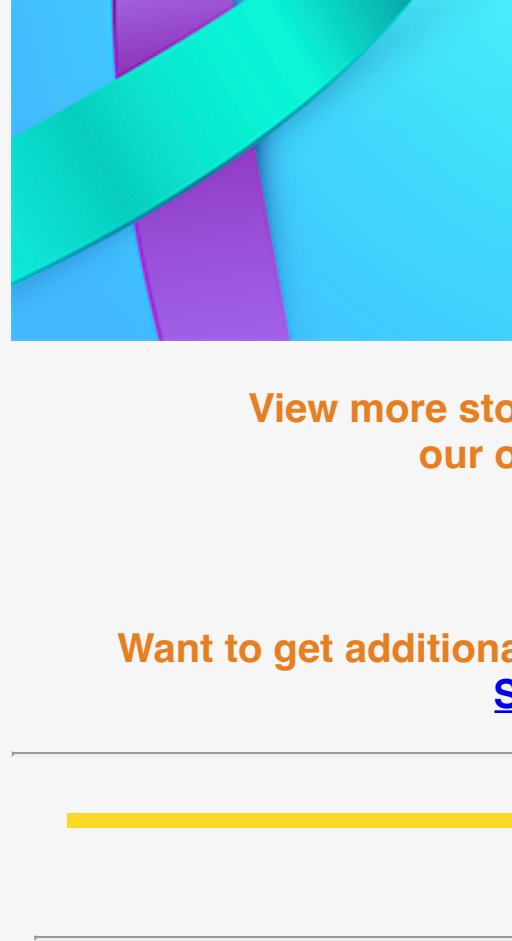


In Case You Missed It - From our social media feed

- [LGBTQ care must go beyond guidelines](#)
- [Niece Nash Comes Out as She Announces Marriage to Singer Jessica Betts: 'Love Wins'](#)
- [UNC English professor, key writer on Black and gay culture, passes away](#)
- [Compton's Cafeteria Riot Anniversary Marked With 'Black Trans Lives Matter' Mural in Tenderloin](#)
- [Hungry Ghost's Suzy Wrong Talks About Trans Representation And 'Transphobia In Many Asian Cultures'](#)

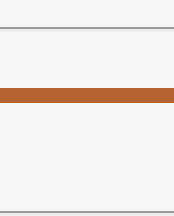
Source: NAMI.org

September is Suicide Prevention Awareness Month




Know Some of the Warning Signs:

- Increased alcohol and drug use
- Aggressive behavior
- Withdrawal from friends, family and community
- Dramatic mood swings
- Impulsive or reckless behavior



View more stories and images by joining our online community!



Want to get additional newsletters and event updates? [Sign up HERE!](#)

JOIN STUDY

Already joined? [Click here to log in.](#)